

# SOLIDGrip 46 – jaw width 46mm

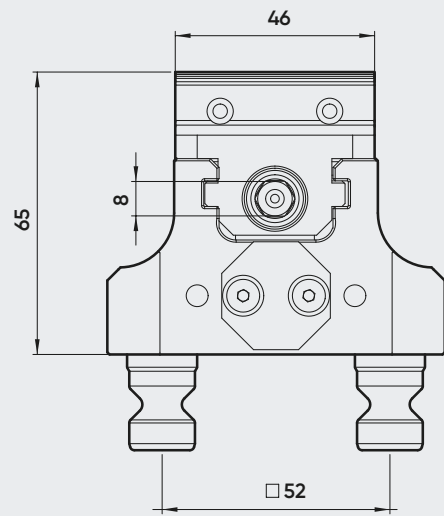
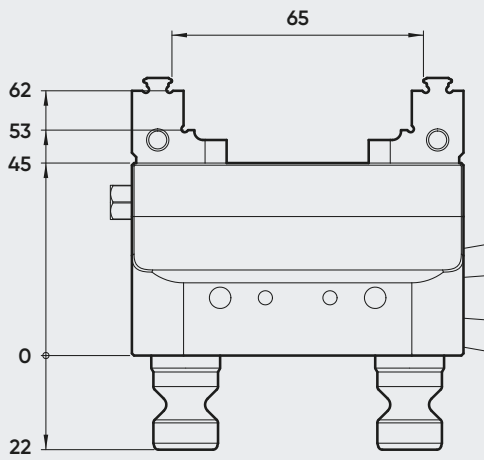
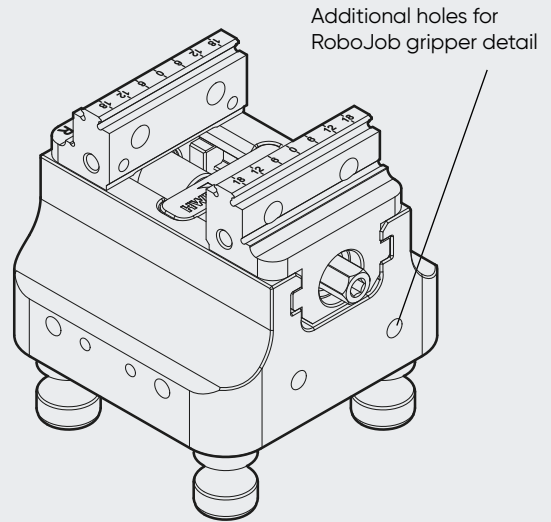
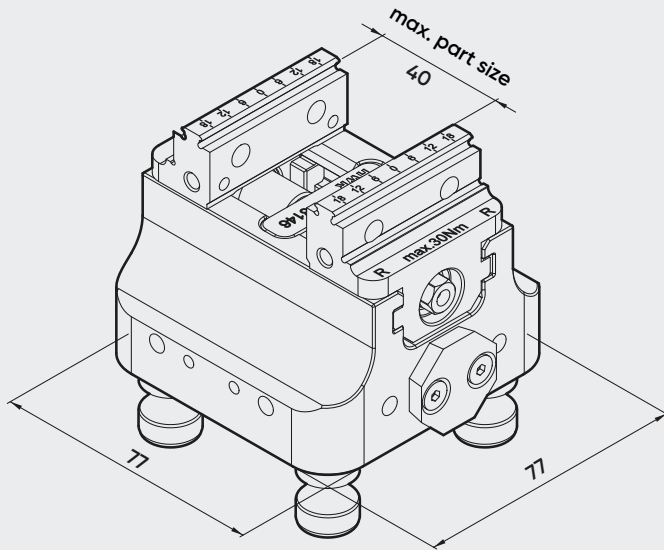
## 5-axis centering vice

### APPLICATION

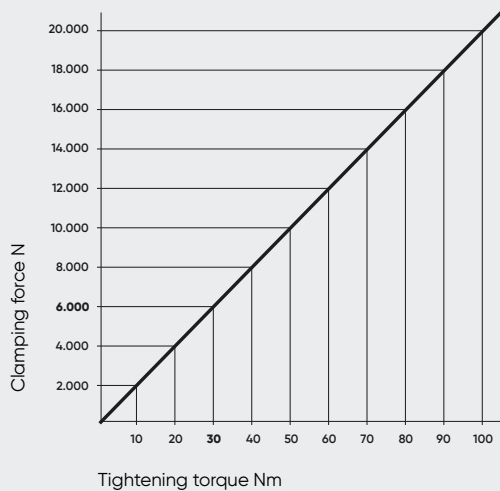
- Suitable for **SOLIDPoint**® 52 and QuickPoint 52 from Lang
- Clamping with stamping technology or smooth soft surfaces
- Jaws can be used on both sides
- Includes transport plate for automation handling



Ident-no.	691065-46-MMT	
Jaw width	mm	46
Body length	mm	77
Clamping range	mm	0 - 65
Zero-point system	mm	52
Zero-point bolt	mm	16
Tightening torque	Nm	30
Clamping force	kN	6
Centering accuracy	mm	± 0,02
Weight	kg	1,7
Compatible with	Ident-no.	47065



Tightening torque - clamping force diagram



NOTE

- Please note that spare jaws must always be replaced as a pair
- Always use a torque wrench to tighten the jaws
- If required, the smooth surfaces of the jaws can be coated with wolfram-carbide. This increases the holding force

The max. tightening torque of the respective vice must be observed.

# SOLIDGrip 46 – jaw width 46mm

## Spare parts and accessories



Image may differ

<b>Suitable for ident-no.</b>	<b>691065-46 / 691105-46 / 691145-46</b>	
<b>Ident-no.</b>	<b>681046-0020</b>	
<b>Jaw width</b>	mm	46
<b>Weight</b>	kg	0,5
<b>Compatible with</b>	Ident-no.	47046-20
<b>Tungsten-carbide coating</b>	Ident-no.	681077-4601



Image may differ

<b>Suitable for ident-no.</b>	<b>691065-46</b>	<b>691105-46</b>	<b>691145-46</b>	
<b>Ident-no.</b>	<b>68146082</b>	<b>68146122</b>	<b>68146162</b>	
<b>Spindle length</b>	mm	82	122	162
<b>weight</b>	kg	0,08	0,10	0,12
<b>Compatible with</b>	Ident-no.	4046082	68146122	4046162

# SOLIDGrip 77 – jaw width 46mm

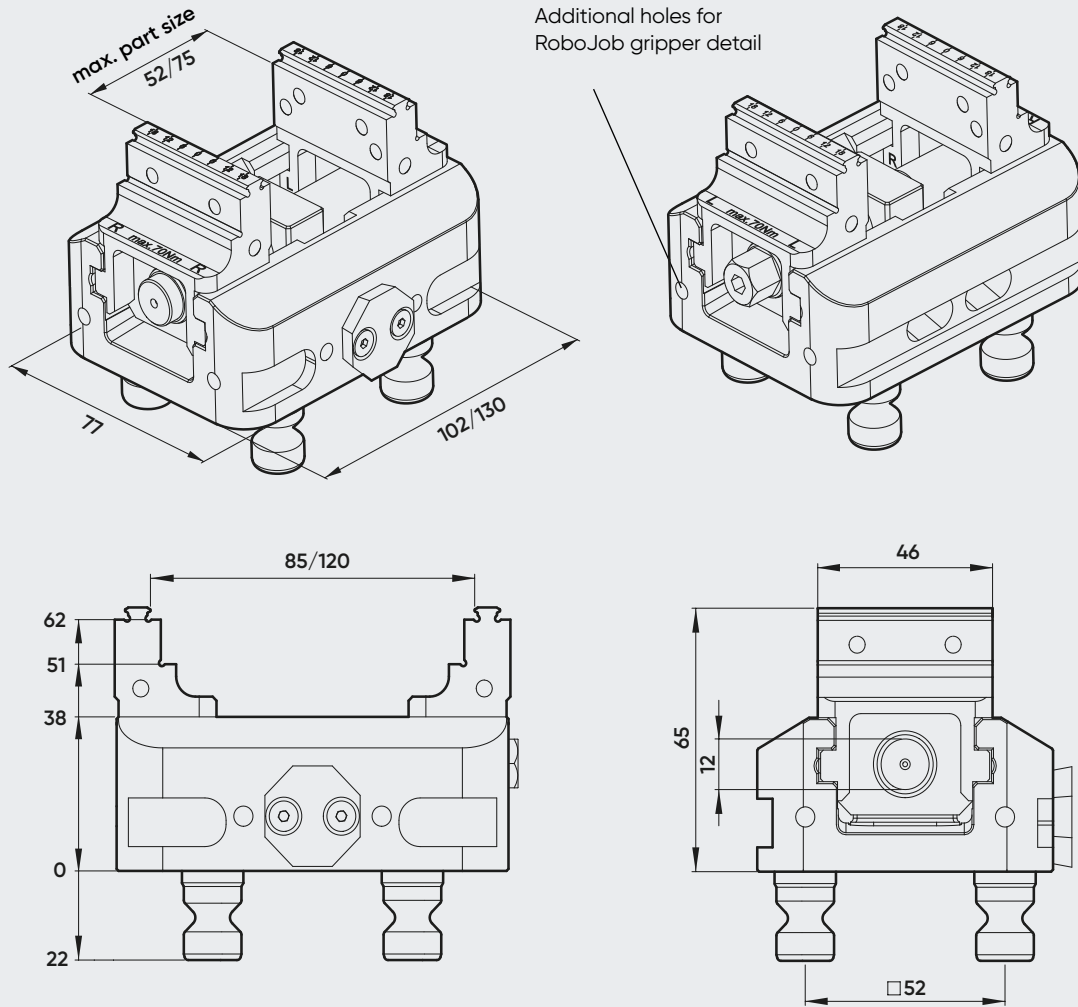
## 5-axis centering vice

### APPLICATION

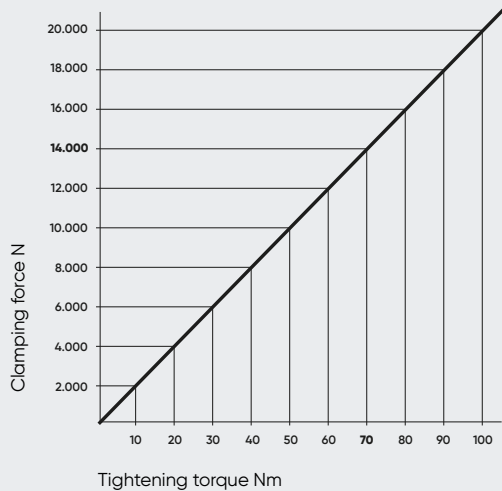
- Suitable for **SOLIDPoint**® 52 and QuickPoint 52 from Lang
- Clamping with stamping technology or smooth soft surfaces
- Jaws can be used on both sides
- Includes transport plate for automation handling



Ident-no.		681085-46-MMT	681120-46-MMT
Jaw width	mm	46	46
Body length	mm	102	130
Clamping range	mm	0 - 85	0 - 120
Zero-point system	mm	52	52
Zero-point bolt	mm	16	16
Tightening torque	Nm	70	70
Clamping force	kN	14	14
Centering accuracy	mm	0,02	0,02
Weight	kg	2,2	2,6
Compatible with	Ident-no.	48085-46	48120-46



Tightening torque - clamping force diagram



**NOTE**

- Please note that spare jaws must always be replaced as a pair
- Always use a torque wrench to tighten the jaws
- If required, the smooth surfaces of the jaws can be coated with wolfram-carbide. This increases the holding force

The max. tightening torque of the respective vice must be observed.

# SOLIDGrip 77 – jaw width 46mm

## Spare parts and accessories



Suitable for ident-no.		683085-46 / 681085-46	683120-46 / 681120-46
Ident-no.		681085-4620	681077-4620
Jaw width	mm	46	46
Weight	kg	0,5	0,5
Compatible with	Ident-no.	48085-46	48120-46
Tungsten-carbide coating	Ident-no.		681077-4601



Suitable for ident-no.		683085-46 / 681085-46	683120-46 / 681120-46
Ident-no.		681077-100	681077-135
Spindle length	mm	100	135
Weight	kg	0,2	0,3
Compatible with	Ident-no.	4877100	4877135

# SOLIDGrip 77 – jaw width 77mm

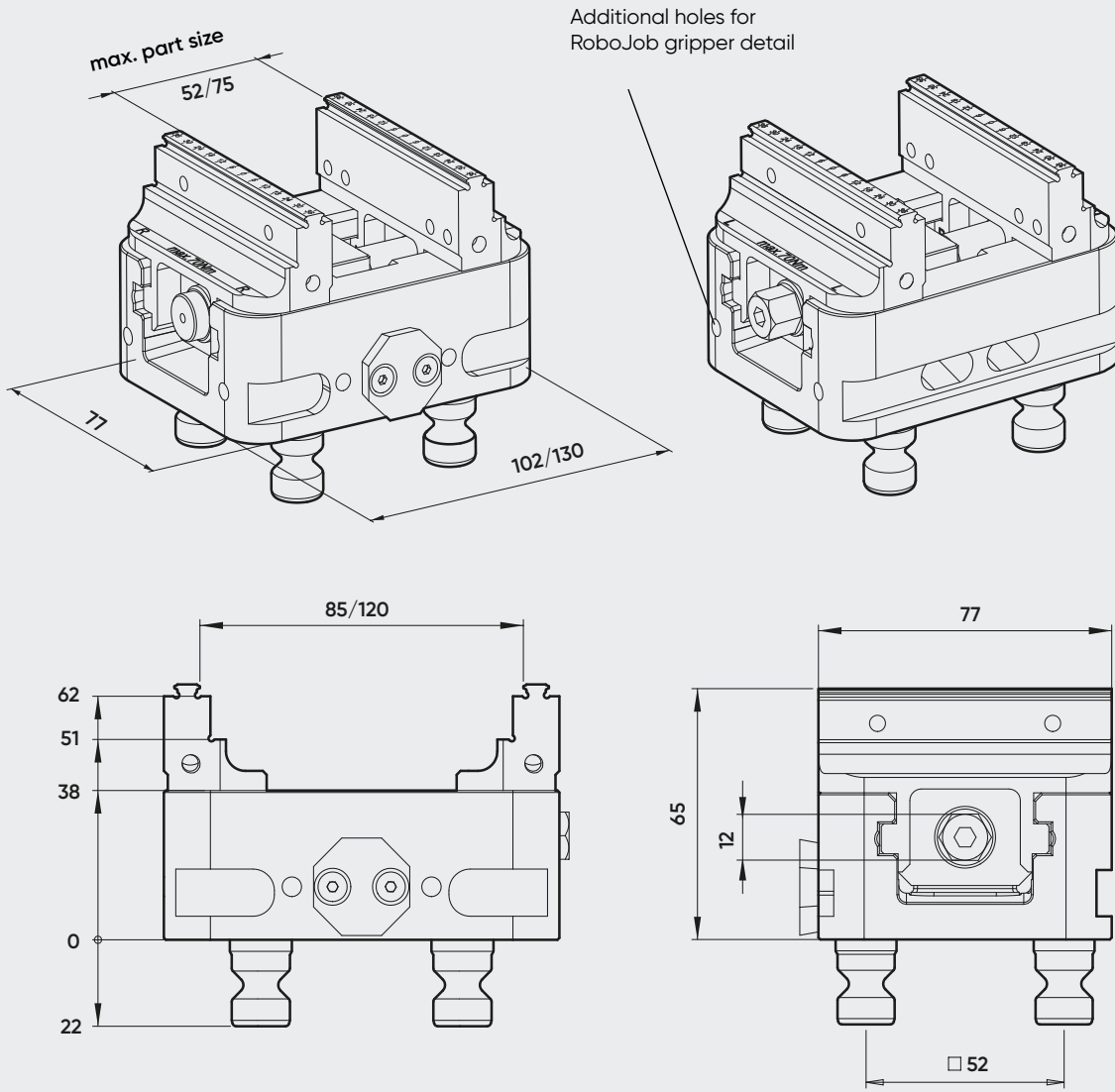
## 5-axis centering vice

### APPLICATION

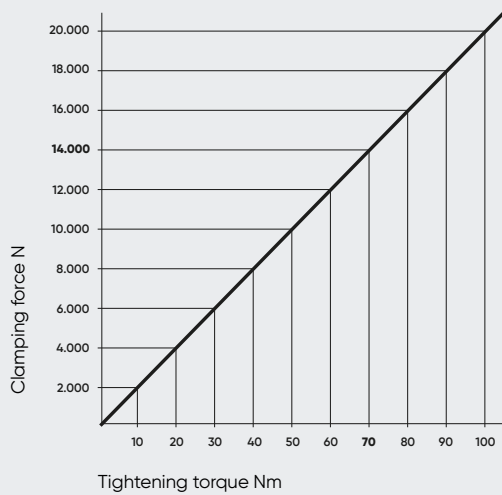
- Suitable for **SOLIDPoint**® 52 and QuickPoint 52 from Lang
- Clamping with stamping technology or smooth soft surfaces
- Jaws can be used on both sides
- Includes transport plate for automation handling



Ident-no.		681085-77-MMT	681120-77-MMT
Jaw width	mm	77	77
Body length	mm	102	130
Clamping range	mm	0 - 85	0 - 120
Zero-point system	mm	52	52
Zero-point bolt	mm	16	16
Tightening torque	Nm	70	70
Clamping force	kN	14	14
Centering accuracy	mm	± 0,02	± 0,02
Weight	kg	2,3	2,9
Compatible with	Ident-no.	48085-77	48120-77



Tightening torque - clamping force diagram



**NOTE**

- Please note that spare jaws must always be replaced as a pair
- Always use a torque wrench to tighten the jaws
- If required, the smooth surfaces of the jaws can be coated with wolfram-carbide. This increases the holding force

The max. tightening torque of the respective vice must be observed.



# SOLIDGrip 77 – jaw width 77mm

## Spare parts and accessories



Suitable for ident-no.		<b>681085-77 / 683085-77</b>	<b>681120-77 / 683120-77</b>	<b>681160-77 / 683160-77</b>	<b>681200-77 / 683200-77</b>
Ident-no.		<b>681085-7720</b>	<b>681077-7720</b>	<b>681077-7720</b>	<b>681077-7720</b>
Jaw width	mm	77	77	77	77
Weight	kg	0,7	0,7	0,7	0,7
Compatible with	Ident-no.	48085-77	48120-77	48160-77	48200-77
Tungsten-carbide coating	Ident-no.	681077-7701			



Suitable for ident-no.		<b>681085-77 / 683085-77</b>	<b>681120-77 / 683120-77</b>	<b>681160-77 / 683160-77</b>	<b>681200-77 / 683200-77</b>
Ident-no.		<b>681077-100</b>	<b>681077-135</b>	<b>681077-175</b>	<b>681077-215</b>
Spindle length	mm	100	135	175	215
weight	kg	0,2	0,3	0,4	0,4
Compatible with	Ident-no.	4877100	4877135	4877175	4877215

# SOLIDGrip DRC – jaw width 77/125mm

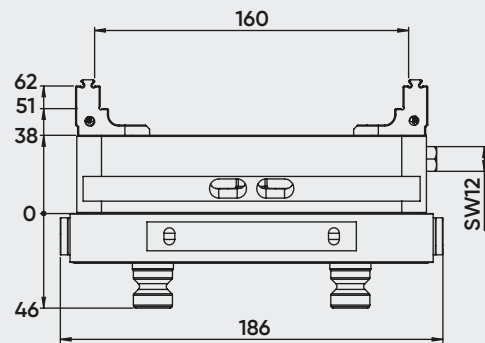
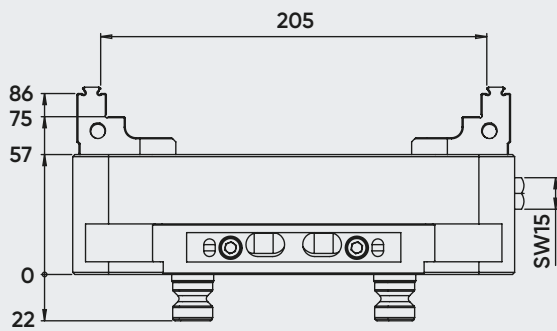
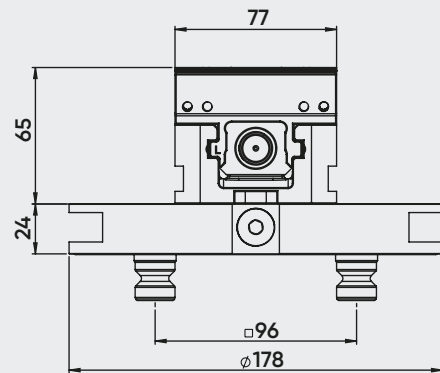
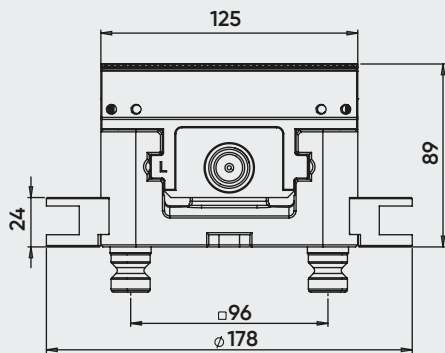
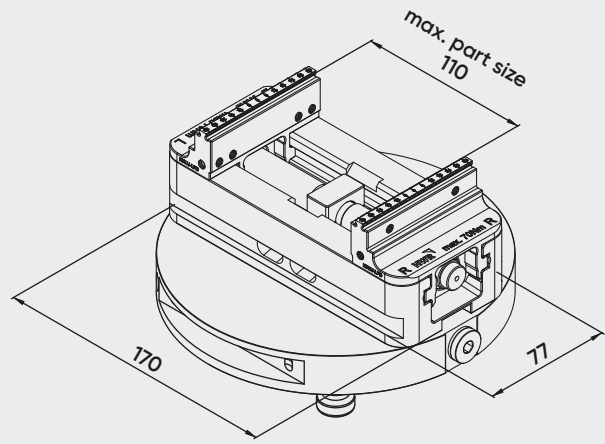
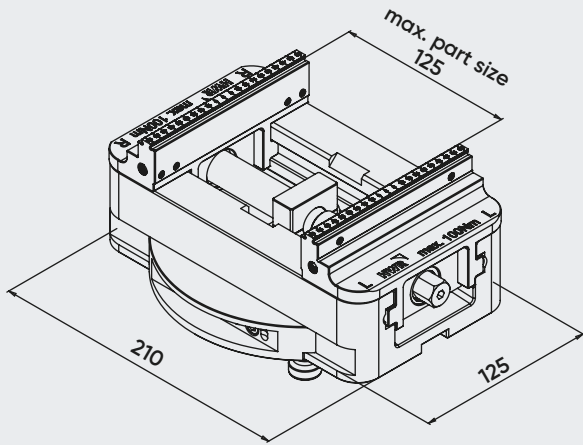
## 5-axis centering vice

### APPLICATION

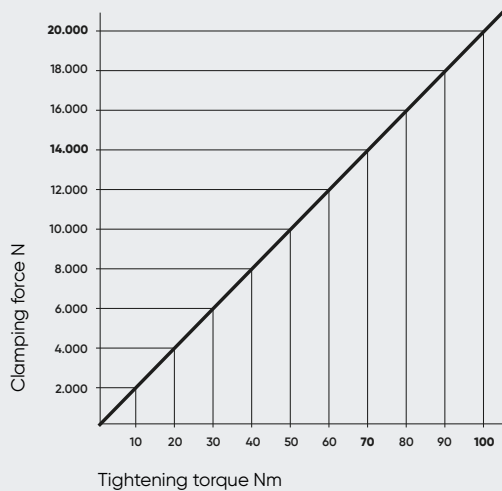
- Suitable for **SOLIDPoint® 96** and QuickPoint 96 from Lang
- Clamping with stamping technology or smooth soft surfaces
- Jaws can be used on both sides
- Includes gripper detail



Ident-no.		681205-125-DRC	681160-77-DRC
Jaw width	mm	125	77
Body length	mm	210	170
Clamping range	mm	0-205	0-160
Zero-point system	mm	96	96
Zero-point bolt	mm	20	20
Tightening torque	Nm	100	70
Clamping force	kN	20	14
Centering accuracy	mm	0,02	0,02
Weight	kg	10,6	7,7
Compatible with	Ident-no.	46205	46160



Tightening torque - clamping force diagram



**NOTE**

- Please note that spare jaws must always be replaced as a pair
- Always use a torque wrench to tighten the jaws
- If required, the smooth surfaces of the jaws can be coated with wolfram-carbide. This increases the holding force

The max. tightening torque of the respective vice must be observed.

# SOLIDGrip AG – jaw width 125mm

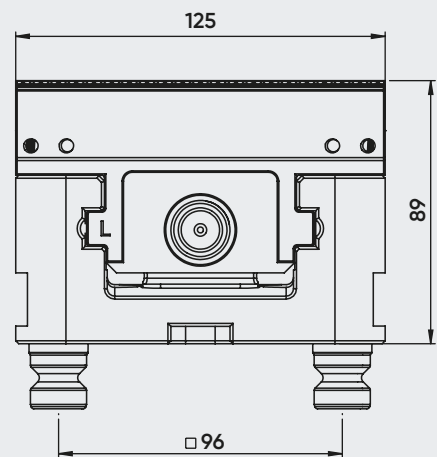
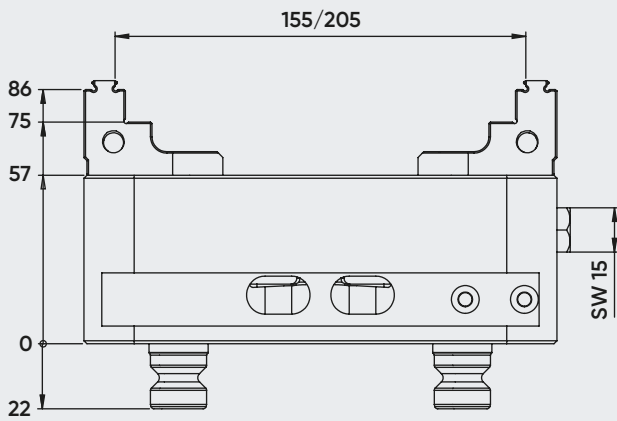
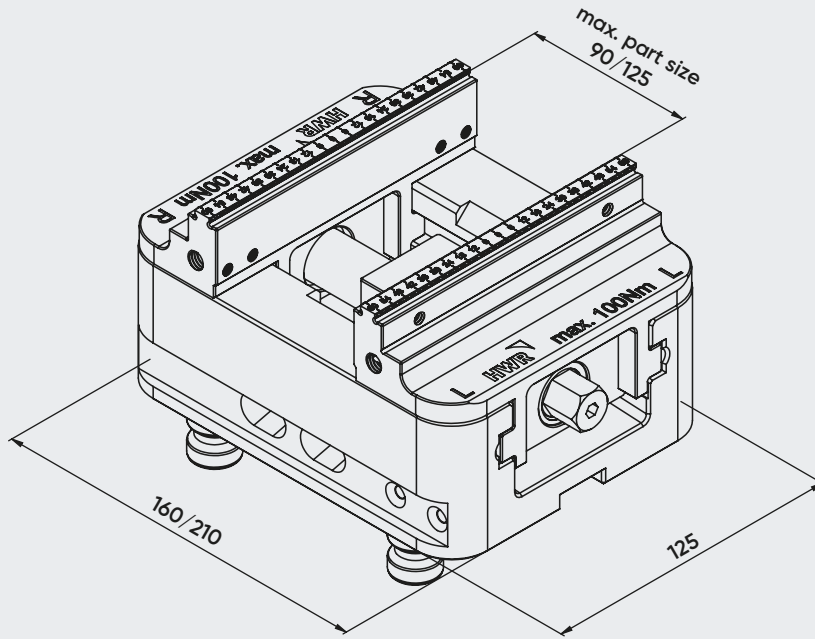
## 5-axis centering vice

### APPLICATION

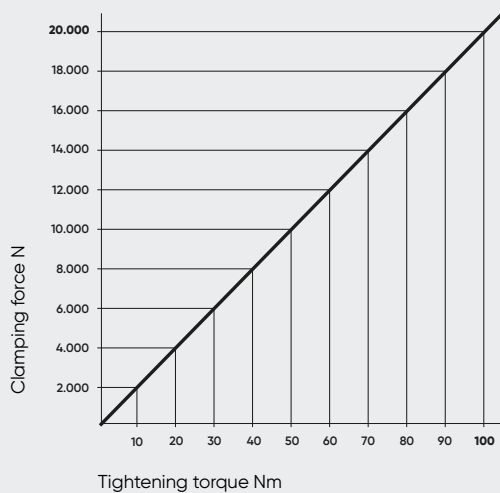
- Suitable for **SOLIDPoint® 96** and QuickPoint 96 from Lang
- Clamping with stamping technology or smooth soft surfaces
- Jaws can be used on both sides
- Includes gripper detail



Ident-no.		683155-125-AG	683205-125-AG
Jaw width	mm	125	125
Body length	mm	160	210
Clamping range	mm	0-155	0-205
Zero-point system	mm	96	96
Zero-point bolt	mm	20	20
Tightening torque	Nm	100	100
Clamping force	kN	20	20
Centering accuracy	mm	0,02	0,02
Weight	kg	8,2	9,9



Tightening torque - clamping force diagram



**NOTE**

- Please note that spare jaws must always be replaced as a pair
- Always use a torque wrench to tighten the jaws
- If required, the smooth surfaces of the jaws can be coated with wolfram-carbide. This increases the holding force

The max. tightening torque of the respective vice must be observed.